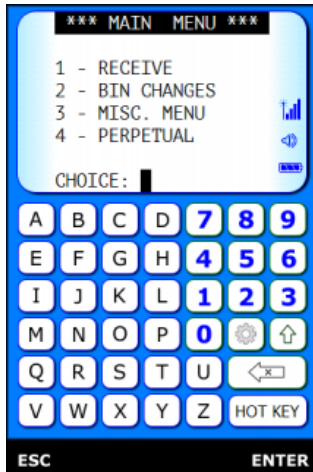
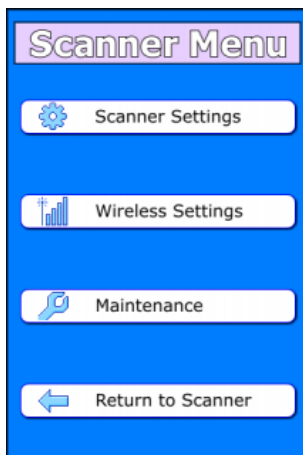


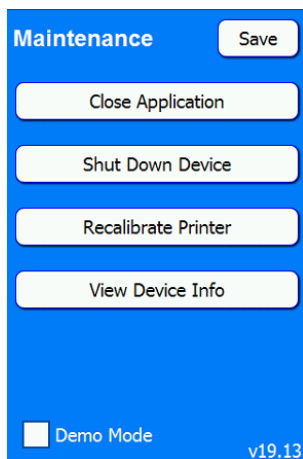
1. Click **Settings** (gear icon) on the scanner.



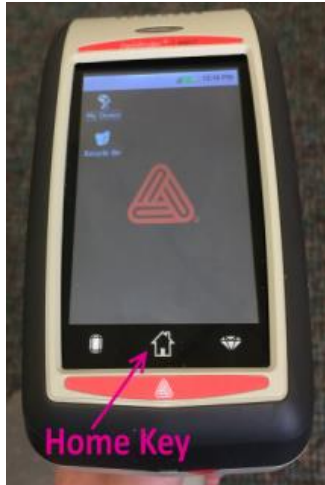
2. Click **Maintenance** to enter the Maintenance Menu.



3. Click **Close Application**.



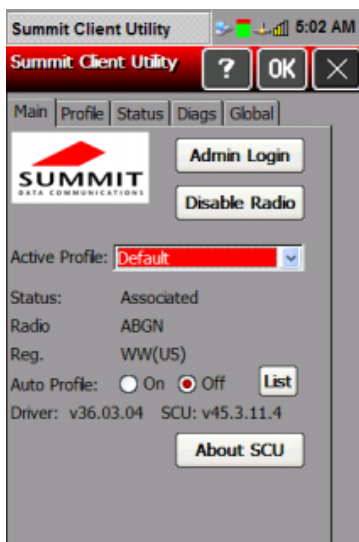
4. Press the **Home** key.



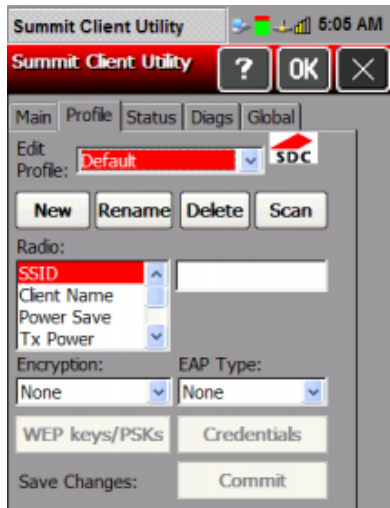
5. Select the **Wi-Fi** option.



6. Click **Admin Login** and enter the password **SUMMIT**. (If no Admin Login button, go to next step).

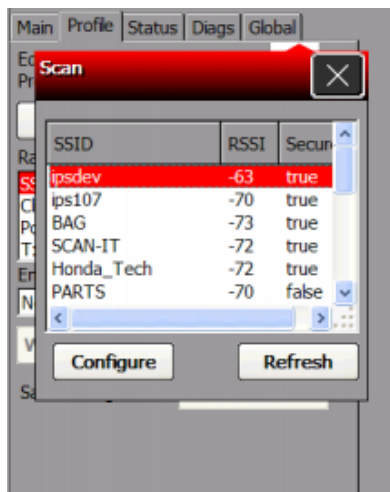


7. Select the **Profile** tab at the top.



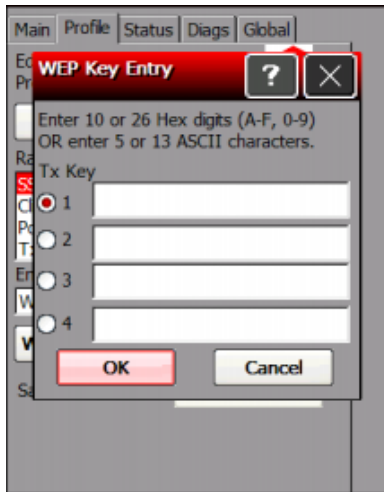
8. Click **Scan** to list all available Wifi options.

9. Find the wifi you want, click on it, and hit **Configure**.



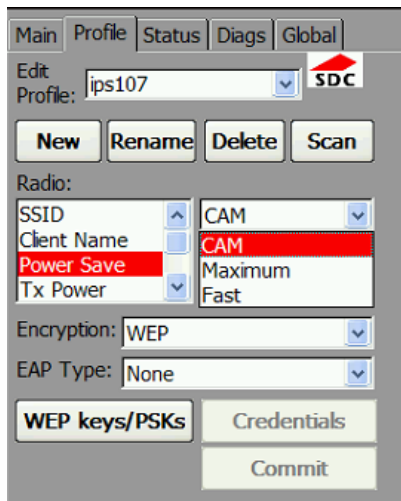
10. The **WEP Key Entry** dialog should appear.

11. Enter the wireless password and click **OK**.

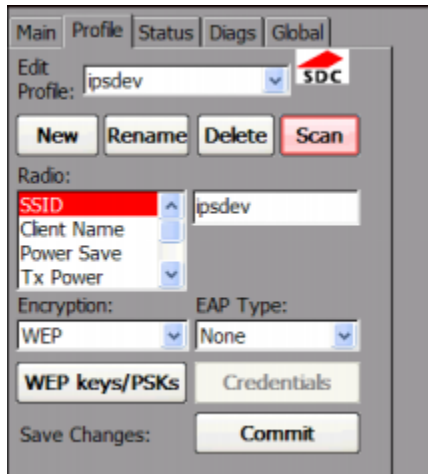


12. In the **Radio** list, select **Power Save**.

13. In the drop down, select **CAM**.

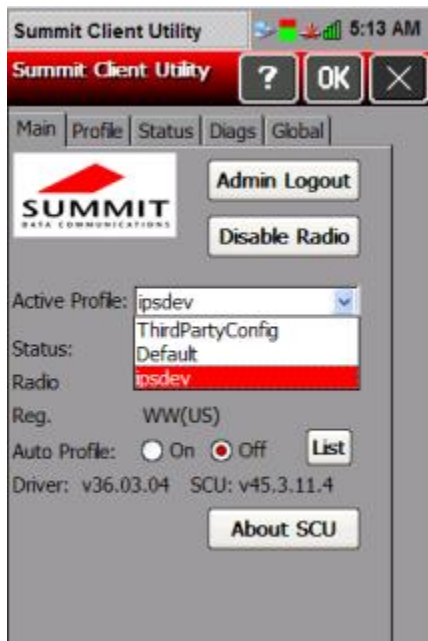


14. Select **Commit**.



The screenshot shows the 'Edit Profile' window for the 'ipsdev' profile. The 'Main' tab is selected. The 'Radio' section has 'SSID' selected in the dropdown menu, with 'ipsdev' entered in the text field. Below this are 'Client Name', 'Power Save', and 'Tx Power' dropdowns. The 'Encryption' is set to 'WEP' and 'EAP Type' is set to 'None'. There are buttons for 'WEP keys/PSKs' and 'Credentials'. At the bottom, there is a 'Commit' button.

15. Select the **Main** tab and switch the **Active Profile** to the one you just created.



The screenshot shows the main window of the Summit Client Utility. The 'Main' tab is selected. The 'Active Profile' dropdown menu is open, showing 'ipsdev' as the selected profile. Other options include 'ThirdPartyConfig' and 'Default'. The 'Radio' dropdown also shows 'ipsdev'. There are buttons for 'Admin Logout', 'Disable Radio', and 'About SCU'. The status bar shows '5:13 AM'.

16. Click **OK** to close the Summit Client Utility.

17. Double-click the **IPSScan**.

